

## **Glass Kiln**

Located at Ravenswood Village, RG45 6BQ



**Kiln Type:** Kilncare Euro Fuser

### **Dimensions**

Height (floor to top, on legs) = 126cm

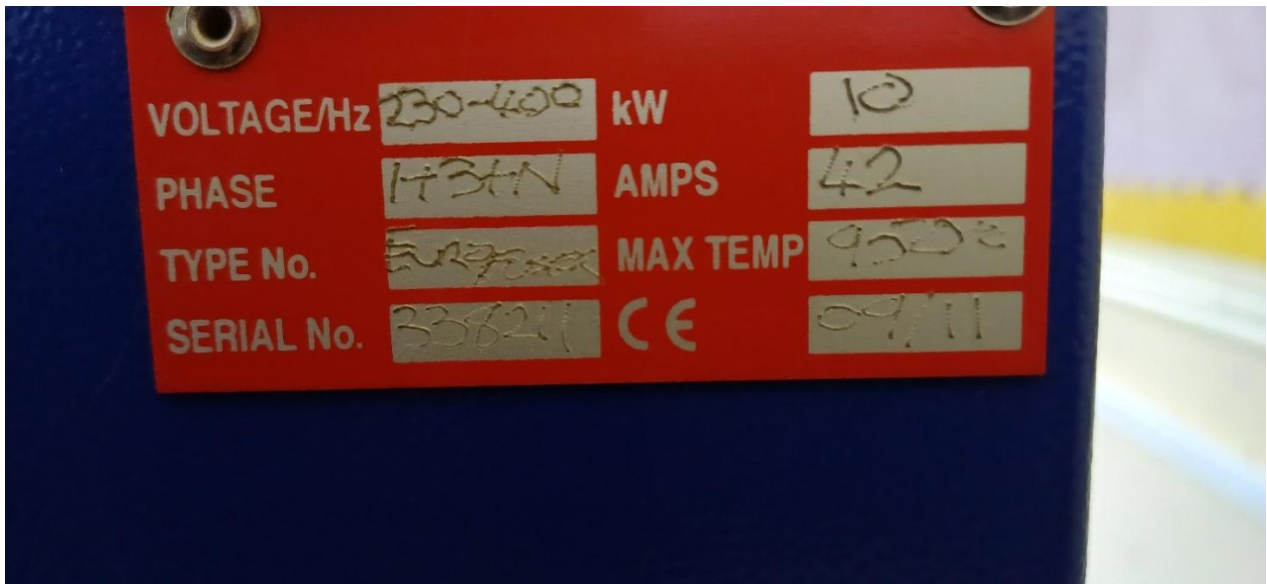
Width (left to right) = 115cm main body, 128cm if include the side arm

Depth (front to back) = 110cm, not including a small power box attached to the rear

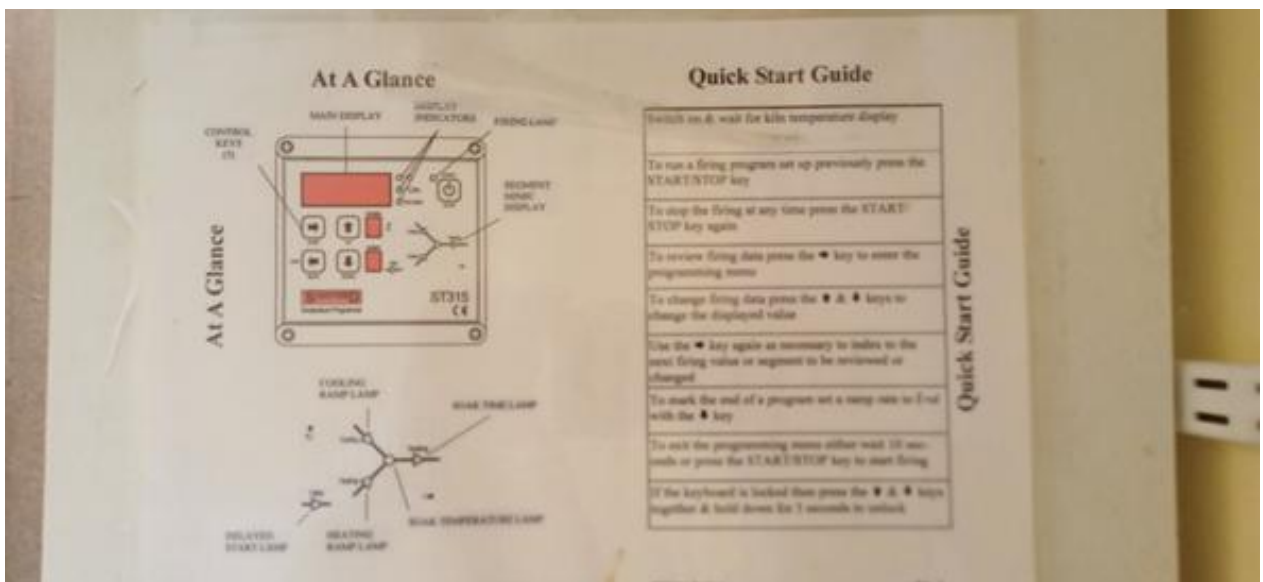
**Plate on rear of machine**

Voltage	230-400	Kw	10
Phase	1+3+N	Amps	42
Type No	Eurofuser	Max Temp	950
Serial No	338211	CE	09/11

**Programmer – Cambridge ST315**



**Programmer – Cambridge ST315**



## Preset Programmes



Kiln Firing Programmes	
Programme 1	- Full Fuse – Warm Glass
Programme 2	- Blank
Programme 3	- Solid Tack Fuse
Programme 4	- Basket Weave Fuse
Programme 5	- Basket Weave Drape
Programme 6	- Slump
Programme 7	- Full Fuse (Main Use)
Programme 8	- Drape
Programme 9	-

## Phase cable and junction



Contact: R Ford

[Russell.ford@norwood.org.uk](mailto:Russell.ford@norwood.org.uk)